


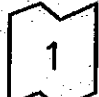


FLOW TYPES
 SF - SHEET FLOW
 SCF - SHALLOW CONCENTRATED FLOW
 CF - CHANNEL FLOW

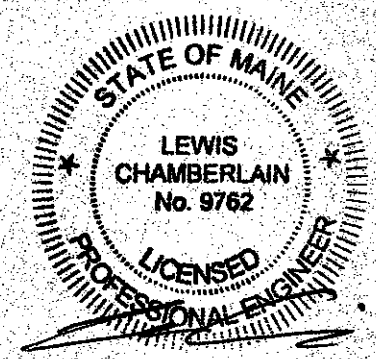
-  SUBCATCHMENT
-  REACH
-  POND
-  ANALYSIS POINT

LEGEND

WETLAND/SOIL BNDY.	UPLAND
EXT. CONTOUR	WETLAND
PRP. CONTOUR	XXX
SUBCATCHMENT BNDY.	XXX
SOIL TYPE BOUNDARY	---
To PATH	FLOW TYPE/LENGTH

SOILS LEGEND

SrC - SKERRY, VERY STONY FINE SANDY LOAM, 0% - 8% SLOPES, HSG C
 BsB - BRAYTON AND WESTBURY, VERY STONY FINE SANDY LOAMS 0% - 8% SLOPES, HSG C
 SkB - SKERRY, FINE SANDY LOAMS 0% - 8% SLOPES, HSG C
 BcC - BECKET, FINE SANDY LOAMS 8% - 15% SLOPES, HSG C



A. NO.	REVISION DESCRIPTION	DATE

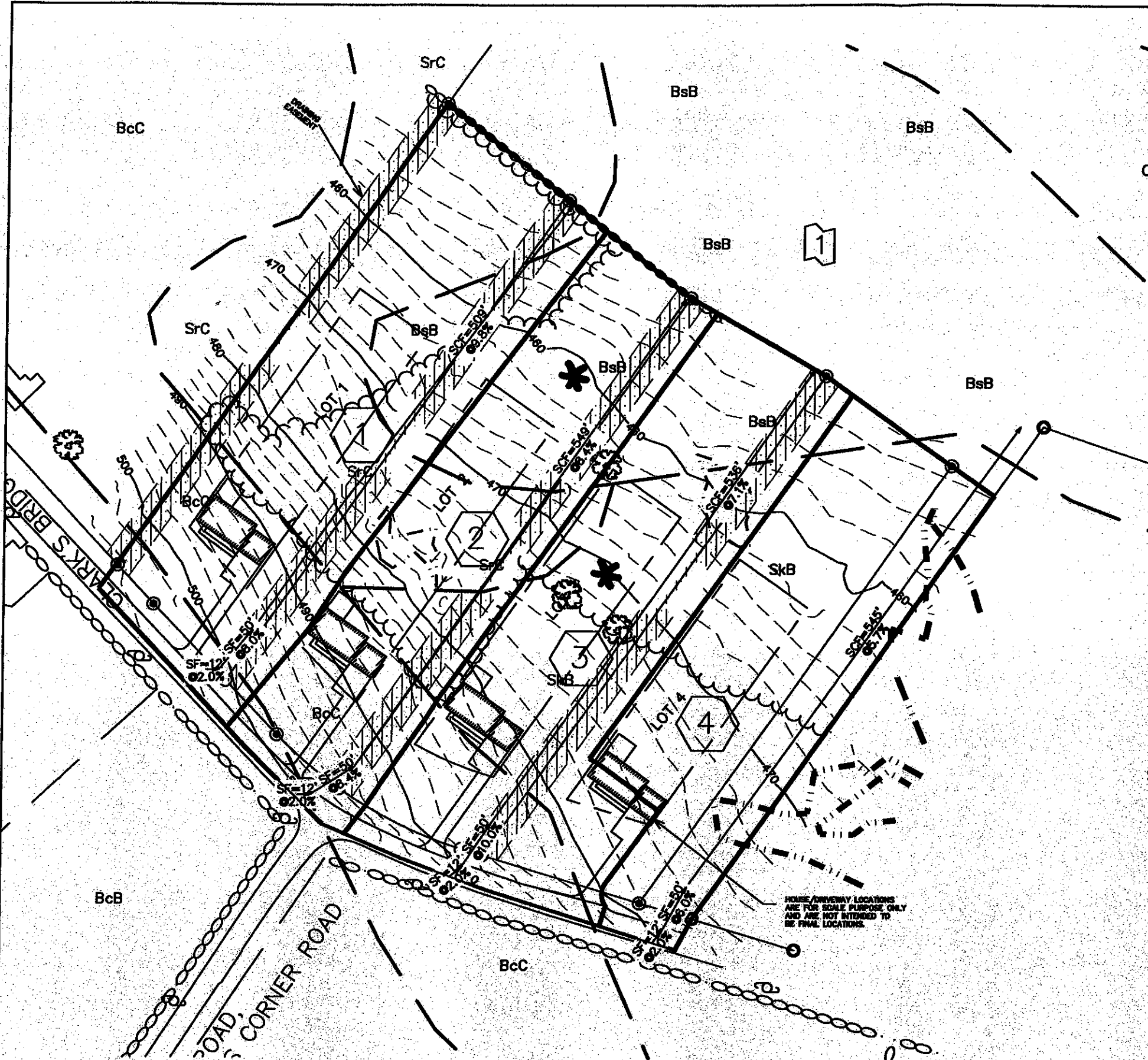
EXISTING STORMWATER
HELEN M. CARPENTER ESTATE
CLARK'S BRIDGE ROAD, WATERBORO, ME

FOR: HELEN M. CARPENTER ESTATE
 CARE OF POST ROAD SURVEYING, INC.
 P.O. BOX 1557
 WELLS, MAINE 04090

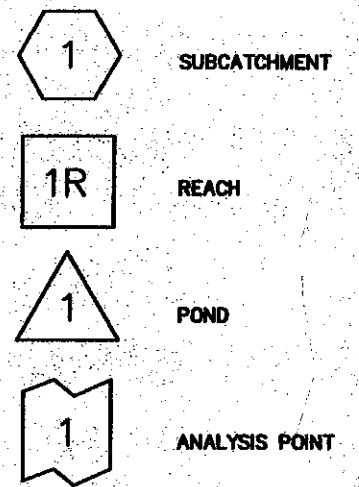
ATTAR ENGINEERING, INC.
 CIVIL • STRUCTURAL • MARINE
 1284 STATE ROAD - ELLIOT, MAINE 03903
 PHONE: (207)438-3023 FAX: (207)438-2128

SCALE 1" = 50'	APPROVED BY: 	DRAWN BY: STB
DATE 10/3/14	REVISION : DATE A : 1/22/2015	SHEET 1 OF 1

JOB NO: C066-15 CAD FILE: HELEN_BASE



FLOW TYPES
 SF - SHEET FLOW
 SCF - SHALLOW CONCENTRATED FLOW
 CF - CHANNEL FLOW



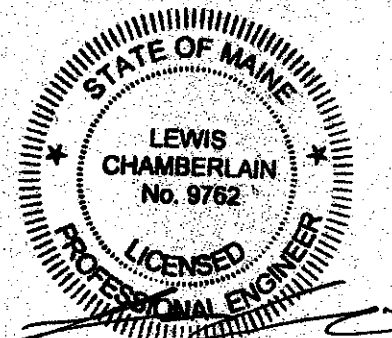
LEGEND

WETLAND/SOIL BNDY.	UPLAND WETLAND
EXT. CONTOUR	XXX
PRP. CONTOUR	XXX
SUBCATCHMENT BNDY.	---
SOIL TYPE BOUNDARY	---
To PATH	FLOW TYPE/LENGTH

SOILS LEGEND

SrC - SKERRY, VERY STONY FINE SANDY LOAM, 0% - 8% SLOPES, HSG C
 BsB - BRAYTON AND WESTBURY, VERY STONY FINE SANDY LOAMS 0% - 8% SLOPES, HSG C
 SkB - SKERRY, FINE SANDY LOAMS 0% - 8% SLOPES, HSG C
 BcC - BECKET, FINE SANDY LOAMS 8% - 18% SLOPES, HSG C

HOUSE/DRIVEWAY LOCATIONS ARE FOR SCALE PURPOSE ONLY AND ARE NOT INTENDED TO BE FINAL LOCATIONS.



PROPOSED STORMWATER
 HELEN M. CARPENTER ESTATE
 CLARK'S BRIDGE ROAD, WATERBORO, ME

FOR: HELEN M. CARPENTER ESTATE
 CARE OF POST ROAD SURVEYING, INC.
 P.O. BOX 1557
 WELLS, MAINE 04090

ATTAR ENGINEERING, INC.
 CIVIL • STRUCTURAL • MARINE
 1284 STATE ROAD - BLDG. 10003
 PHONE: (207) 438-8023 FAX: (207) 438-2128

SCALE: 1" = 50'
 DATE: 10/3/14
 JOB NO: 009-15

APPROVED BY: [Signature]
 DRAWN BY: STB
 REVISION: DATE
 A: 1/22/2018
 SHEET 1 OF 1



NO.	REVISION	DATE
A		1/22/2018